

# AEROSOL CAN CRUSHER

# SUPER 800



www.teemarkmfg.com

CRUSHER DIVISION

MANUFACTURING INC

1132 Air Park Dr. Aitkin, MN 56431

218-927-2200 800-428-9900

Fax 218-927-2333

Email: teemark@teemarkmfg.com

The **Super 800** is an aerosol can crusher that automatically opens, empties, crushes and eject **800 aerosol can per hour.**



**Processes** many different aerosol can sizes with a wide range of can contents. Separates liquid can content from propellants, VOCs and other gaseous components. Also handles small paint cans. Removes and captures 99% of can contents. **Provides** an automatic processing Cycle that begins when the operator inserts the can and closes the door. **Utilizes** explosion proof piercing and crushing systems that have proven themselves on millions of paint cans and pails. **Incorporates** a blower that pull VOCs and propellants from the crushing compartment, crushed aerosol can collection drum and liquid collection drum. This makes the 800 a permanent, total enclosure when the blower is running.

### Air Filtration & Carbon Filtration/Collection

The TeeMark Super 800 moves up to 500 cubic feet of air per minute through its particulate filtration system. The air and gases are then delivered to a 5 inch duct to be dealt with in accordance with local codes. TeeMark offers an **optional carbon filtration/collection system** that has proven to be an economical method for capturing VOC's and other gases whose release to the atmosphere may be prohibited.

### Explosion Proof!

The Super 800 has an explosion proof motor, blower and electrical controls. Class 1, Div. 1 & 2, Group D

The **SUPER 800** has an air/hydraulic logic control system with fewer parts, **improved dependability!**

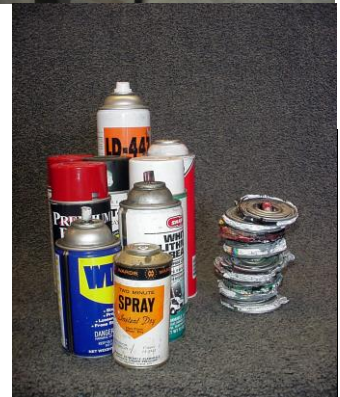
### SPECIFICATIONS

- Crushing Force:** up to 12,000 lbs
- Operating Cycle Time:** 4.5 Seconds
- Dimensions:** 95 inches high, 70 inches wide, 65 inches deep
- Shipping Weight:** 2350
- Crushing Chamber:** Handles cans from 2-12 inches tall and 1-1/2 to 3 inches in diameter



### Reduce Volume Recycle!

The Super 800 will crush a standard 8 inch aerosol can down to 1/2 inch. This typically leaves only 1% of residue in the can!



### ELECTRICAL REQUIREMENTS

- Crusher:** One 230-460 volt, 13/6.5 amps, three-phase
- Collection System:** One 230/460 volt, 3.6/1.8 amps, three-phase
- Air Requirements:** 8 cfm @ 90 psi - oiler, dryer and regulator provided

Motor starters are included.

**Warranty: 6 month limited on materials and workmanship**

**FOR MORE INFORMATION, CALL US: TOLL FREE 800-428-9900**

From 1/2-pints to 110-gallons, TeeMark Can and Drum Crushers prepare containers and their contents for recycling or disposal. Specifications subject to change without notice.